

*Kenton C. Ward, CFM*  
Surveyor of Hamilton County  
Phone (317) 776-8495  
Fax (317) 776-9628

Suite 188  
One Hamilton County Square  
Noblesville, Indiana 46060-2230

### ***Map Correction-Field Verification***

**Drain Number:** 158

**Drain Length:** 15,689.5

**Drain Name:** Homeplace Drain

**Change + / - :** 71

**Date:** October 9, 2015

**New Length:** 15,760.5

**Verified By:** SLM, SAB

---

**Notes & Sketch:** See the attached maps for further detail.

Three short runs of drain were installed as short arms with inlets. These were installed at 108<sup>th</sup> & McPherson (20' of 12" HDPE), 107<sup>th</sup> & Bellefontaine (32' of 12" SDR35), and 106<sup>th</sup> & McPherson (19' of 12" SDR 35). This work was done under with Work Orders – WO-2015-00011, 12, and 33. This work added 71 feet to the Homeplace Drain.

**Suzanne L. Mills**  
GIS Specialist

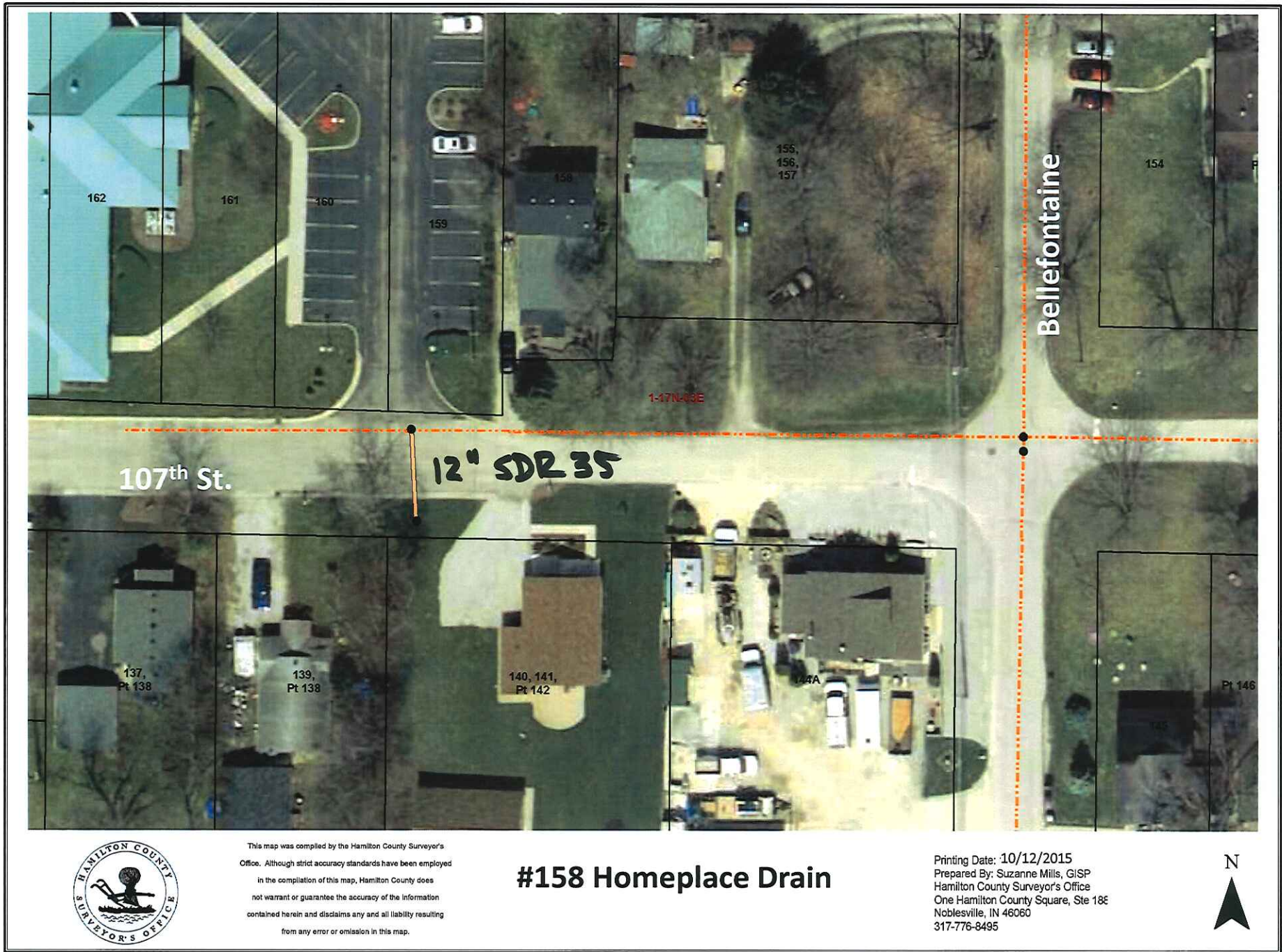


This map was compiled by the Hamilton County Surveyor's Office. Although strict accuracy standards have been employed in the compilation of this map, Hamilton County does not warrant or guarantee the accuracy of the information contained herein and disclaims any and all liability resulting from any error or omission in this map.

## #158 Homeplace Drain

Printing Date: 10/12/2015  
 Prepared By: Suzanne Mills, GISP  
 Hamilton County Surveyor's Office  
 One Hamilton County Square, Ste 18E  
 Noblesville, IN 46060  
 317-776-8495





This map was compiled by the Hamilton County Surveyor's Office. Although strict accuracy standards have been employed in the compilation of this map, Hamilton County does not warrant or guarantee the accuracy of the information contained herein and disclaims any and all liability resulting from any error or omission in this map.

### #158 Homeplace Drain

Printing Date: 10/12/2015  
 Prepared By: Suzanne Mills, GISP  
 Hamilton County Surveyor's Office  
 One Hamilton County Square, Ste 18E  
 Noblesville, IN 46060  
 317-776-8495





This map was compiled by the Hamilton County Surveyor's Office. Although strict accuracy standards have been employed in the compilation of this map, Hamilton County does not warrant or guarantee the accuracy of the information contained herein and disclaims any and all liability resulting from any error or omission in this map.

## #158 Homeplace Drain

Printing Date: 10/12/2015  
 Prepared By: Suzanne Mills, GISP  
 Hamilton County Surveyor's Office  
 One Hamilton County Square, Ste 18E  
 Noblesville, IN 46060  
 317-776-8495

